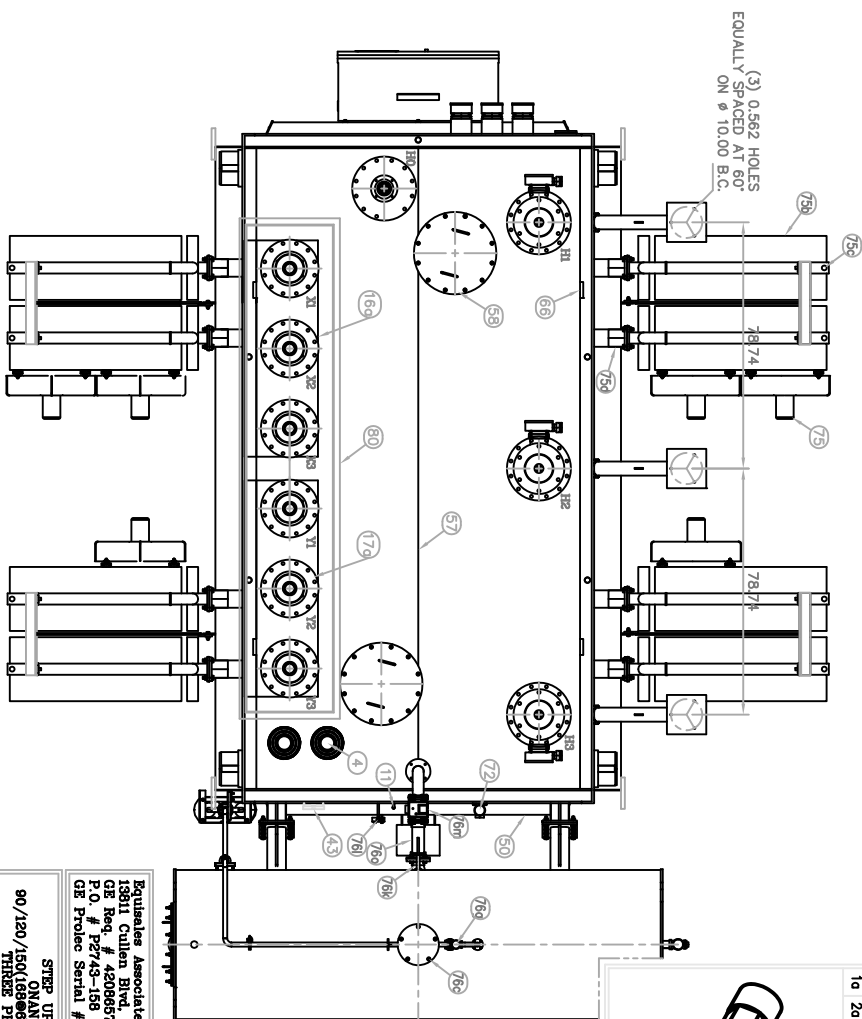
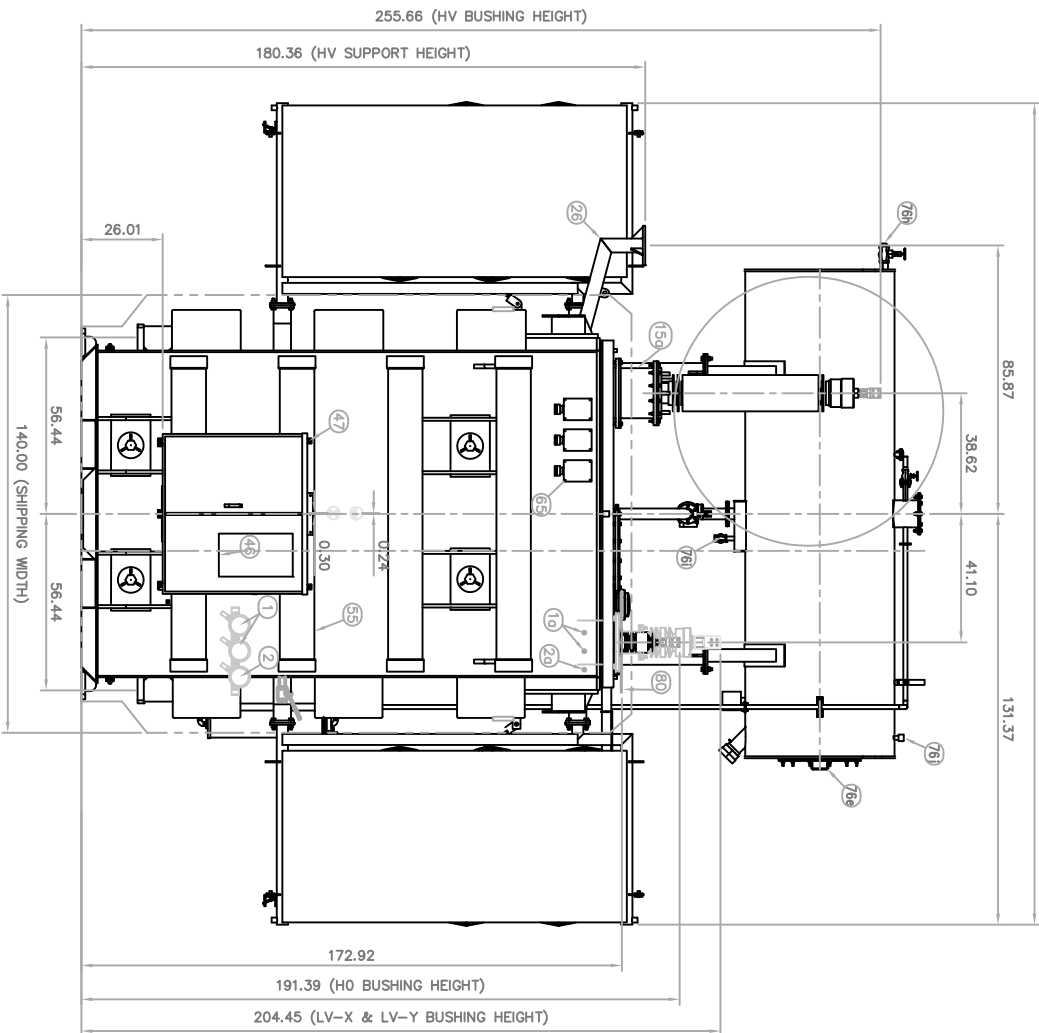
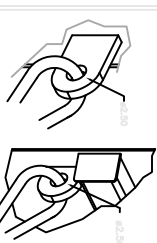
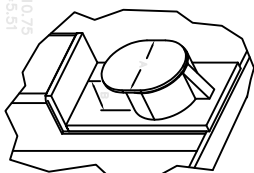
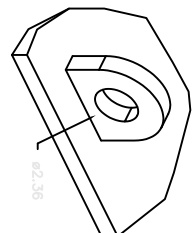
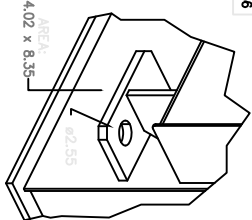
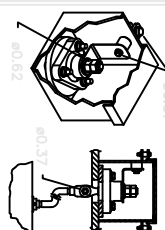
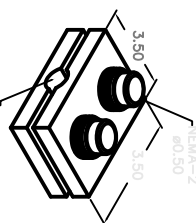
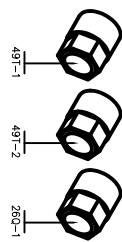


"BASE DETAIL"  
THE HATCHED AREA REPRESENT THE BOTTOM OF THE TRANSFORMER,  
THIS AREA DOESN'T SIT ON THE FLOOR.



(3) 0.562 HOLES  
EQUALLY SPACED AT 60°  
ON Ø 10.00 B.C.



## DESCRIPTION

|   |    |   |
|---|----|---|
| 2 | 1  | WINING TEMPERATURE INDICATOR MESSKO MT-ST160RNM/TT/AC/AM (491-1/2)      |
| 2 | 10 | THERMO- WELL FOR WINDING TEMPERATURE INDICATOR                          |
| 2 | 12 | LIQUID TEMPERATURE INDICATOR MESSKO MT-ST160RM/2C/AM (260-1)            |
| 2 | 20 | HERMO- WELL FOR LIQUID TEMPERATURE INDICATOR                            |
| 2 | 96 | HYDRANT (5" Ø) VALVE QUALITROL LP8000-0008306 (63PR-1)                  |
| 1 | 11 | PRESSURE-VACUUM GAUGE FOR SHIPPING                                      |
| 3 | 14 | LV BUSHING CONNECTOR DELTA PMS9012-1-4N4-E                              |
| 3 | 14 | LV BUSHING (X) CONNECTOR DELTA PMS6212-1-13-E                           |
| 3 | 14 | LEVERING SHUT OFF VALVE DELTA PMS6212-1-13-E                            |
| 3 | 15 | HIGH VOLTAGE BUSHING LAPF 1538 KV P0058061216CMS                        |
| 3 | 15 | H.V. REMOVABLE BUSHING TURET  |
| 3 | 15 | 16 LOW VOLTAGE (X) BUSHING LAPF 25 KV B8874-2-70                        |
| 3 | 16 | LV. REMOVABLE BUSHING TURET 25 KV B8874-2-70                            |
| 3 | 17 | LOW VOLTAGE (X) BUSHING TURET   |
| 3 | 17 | NEUTRAL BUSHING HO BOO NMC 23 KV 639274                                 |
| 3 | 26 | HV SURGE-ARRESTER SUPPORT   |
| 2 | 40 | COPPER GROUND PAD   |
| 2 | 42 | CONE GROUND BUSHING TERMINAL BOX (MAIN UNIT)                            |
| 1 | 43 | NAMED GROUND BUSHING BOX  |
| 1 | 44 | CONTROL CABINET   |
| 1 | 47 | CONTROL CABINET   |
| 1 | 50 | DE-ENERGIZED TAP-CHANGER ABB DTWC 2 DECKS                               |
| 1 | 51 | BASE SKIDS (4 DIRECTION)  |
| 1 | 55 | LANK BRACES   |
| 1 | 57 | LANK SUPPORTS AND PULLING EYES  |
| 2 | 58 | INSPECTION MANHOLE  |
| 2 | 65 | CT TERMINAL BOX   |
| 4 | 66 | LIFTING EYE COVER ONLY  |
| 4 | 67 | SUPPLY LUGS COMPLETELY ASSEMBLED TRANSFORMER                            |
| 4 | 72 | TOP FILTER DRESS VALVE (2.00 Ø) GLOBE-TYPE                              |
| 1 | 73 | MAIN TANK DRAIN VALVE (1.00 Ø) GLOBE-TYPE WITH SAMPLING DEVICE & FLUIDO |
| 2 | 74 | IMPACT RECORDER FOR SHIPPING  |
| 1 | 75 | COOLING FAN F260-4972   |
| 1 | 75 | RADIATOR SUPPORTS AND BRACES  |
| 1 | 75 | RADIATOR SUPPORTS AND BRACES (1.00 Ø)                                   |
| 1 | 16 | 75D RADIATOR VALVE FLAPPER-TYPE (5.00 Ø)                                |
| 1 | 76 | CONSERVATOR TANK WITH INTERNAL BLADDER                                  |
| 1 | 76 | CONSERVATOR TANK SUPPORT  |
| 1 | 76 | CONSERVATOR MAGNETIC LIQUID LEVEL GAUGE ORTO 0168-IR/5 (710-1)          |
| 1 | 76 | STANDHOLE TO INSTALL BLADDER  |
| 1 | 76 | CONSERVATOR MANHOLE   |
| 1 | 76 | SILICA-GEI SHUT OFF VALVE (1.00 Ø) GLOBE-TYPE                           |
| 1 | 76 | CONSERVATOR PRESSURE EQUALIZATION VALVE (1" Ø) GLOBE-TYPE               |
| 1 | 76 | CONSERVATOR FILL VALVE (2.00 Ø) GLOBE-TYPE                              |
| 1 | 76 | CONSERVATOR DRAIN PIPE (1.00 Ø) GLOBE-TYPE                              |
| 1 | 76 | CONSERVATOR TANK TO MAIN TANK VALVE (3.00 Ø) GLOBE-TYPE                 |
| 1 | 76 | PROTECTIVE RELAY BUZDCH EMB 53-28-29-311 (63BH-1)                       |
| 1 | 80 | LOW VOLTAGE "X" AND LOW VOLTAGE "Y" BUS DUCT                            |

| APPROXIMATE WEIGHTS (POUNDS)        |        |
|-------------------------------------|--------|
| CORE AND COILS                      | 195164 |
| TANK AND FITTINGS                   | 770996 |
| MAIN TANK LIQUID (11301 GALS)       | 848766 |
| COOLING EQUIPMENT LIQUID (634 GALS) | 4760   |
| CONSERVATOR TANK LIQUID (438 GALS)  | 3285   |
| TOTAL WEIGHT                        | 358181 |
| UNLANKING WEIGHT (HEAVIEST PIECE)   | 195164 |
| SHIPPING WEIGHT (WITHOUT OIL)       | 239400 |

| TOLERANCES                                   |                  |
|--|------------------|
| Centerline distance of not inclined bushings | ±.250            |
| Centerline distance of inclined bushings     | +1.000<br>- .250 |
| Bushings height (distance to floor)          | ±.500            |
| Outlet of controls cabinet distance          | ±.250            |
| H & LV bushings center distance              | ±.500            |
| Surge arrester height (distance to floor)    | ±.500            |
| Center tank distance to short side           | ±.500            |
| Center tank distance to large side           | ±.500            |
| Conservator height                           | ±.500            |
| Anchoring center line                        | ±.125            |
| Attaching base center line                   | +1.000<br>- .187 |
| Pattern distance                             | ±.500            |
| Outline                                      | 0" - .187        |
| Dimensions                                   | 197" - 197"      |
|  | 197" & Above     |
|  | ±2.000           |

d) ITEMS REMOVE FOR SHIPMENT ARE MARKED WITH (\*).

OPERATION CENTER OF GRAVITY  
SHIPPING CENTER OF GRAVITY

|                                    |                       |
|------------------------------------|-----------------------|
| REV. ADDED ITEMS 15q,16q,17a & 80. | REV.                  |
| 3                                  | 4                     |
| AAT                                |                       |
| REV. ADDED BUS DUCT DETAIL         | CHANGED QTY. ITEM 655 |
| 7/20/08                            |                       |

## TRANSFORMER'S OUTLINE

|                          |   |
|--------------------------|---|
| Third Angle Projection : |  |
| Scale : 1 : 30           |   |

G213701D801